



UNIVERSITY OF
SOUTH CAROLINA

BEAUFORT

Beaufort County Capital Sales Tax Commission

Dr. Al Panu

Chancellor, University of South Carolina Beaufort

March 22, 2016

Due diligence:

Does project meet CST guidelines?

- ✓ Realistic, achievable capital infrastructure need
- ✓ Funding requested covers all costs
- ✓ Project completed in reasonable time period
- ✓ Maintenance and operations costs funded
- ✓ No competition with private sector
- ✓ Brick and mortar request only

Strengthen Beaufort County's Economy

by

Enhancing Retiree Quality of Life:

The Osher Lifelong Learning Institute

at USCB

What if together we could envision a project that...

- Benefits every citizen in Beaufort County
- Enhances residential and business property values across our county
- Engages citizens in civic life and learning
- Leverages taxpayer funding with private gifts and the support of a national foundation
- Backed by a local organization with demonstrated results

Join a successful collaboration

- Bernard Osher Foundation
- The Osher Lifelong Learning Institute at USCB
- The University of South Carolina Beaufort

OLLI: High Impact Organization

Members: 1557

Course Enrollments this term: 20,297

Serves all of Beaufort County

Beaufort classes/term: 66

Bluffton classes/term: 79

Hilton Head classes/term: 56

Top 10% in the US



“My wife & I decided to move to the Beaufort area rather than to Aiken due to the OLLI program.

OLLI opened our eyes and heart to the historical and ecological richness of the area along with creating our community well outside of our development.

Thank you for helping us build what we now affectionately call home.” *--Mac J.*

A Growing OLLI program...in Beaufort County

- Attracts the type of exceptional retiring residents who enhance our nonprofits, community leadership and philanthropic base
- Facilitates integration and engagement of new residents into Beaufort County
- Enhances property values, drives economic activity and tax revenue growth.

In the nation-wide race to attract forward-looking, community-engaged retiring leaders....



Facilities infrastructure for OLLI
is a critical competitive advantage

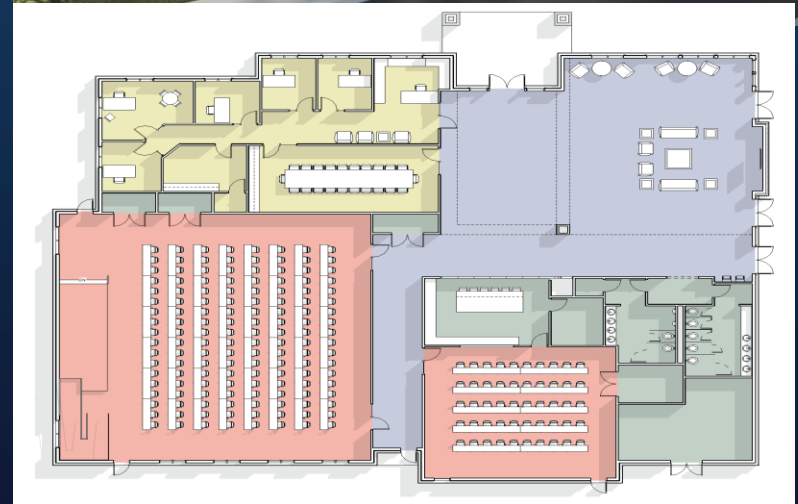
Osher Life Long Learning Project Components

- 1. OLLI Building - Bluffton**
- 2. OLLI Building - Hilton Head Island**
- 3. OLLI Building - Beaufort**

Osher Lifelong Learning Facility

Bluffton

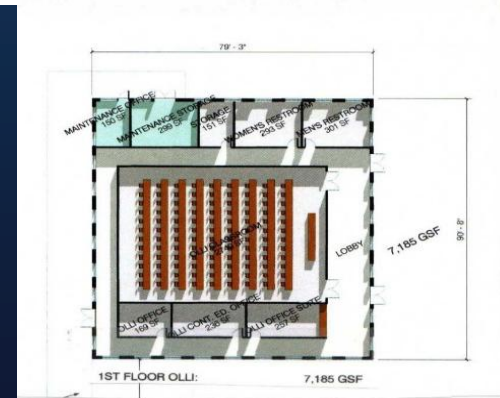
- 300 seat auditorium
- Three classrooms
- Small demonstration kitchen for lifelong learning
- Multipurpose room
- Dedicated OLLI Parking



Request: \$4.5 M
Private Funding Match: \$1.5 M
Total Facility Budget: \$6.0 M

Osher Lifelong Learning Facility Hilton Head Island

- OLLI classrooms
- Offices
- Parking



Total Facility Budget: \$4.0 M

Osher Lifelong Learning Building Beaufort

- Current OLLI space in Beaufort is at capacity, limiting growth.
- Create a distinctive center of operations for OLLI in Beaufort
- Renovate existing space or construct new facility

Proposed Project: Capital Sales Tax Commission

Project Funding Request: \$12.0 M

OLLI at USCB Private Funds Match: \$1.5 M

USCB Infrastructure Investment:

land, water, sewer, roadways, power,
internet connectivity, and other infrastructure
assets.

Return on USCB Investments

In 2003, Beaufort County made an infrastructure investment of \$30,194,113 in USCB

Today, USCB generates estimated \$90M in economic impact each year.

**\$90M impact/\$30M investment=
300% return on investment**

“When we vacationed here and saw that there was an OLLI, we looked forward to the day we lived here full time, so we could attend OLLI classes.

Here we are. Thank you!”

OLLI project benefits every citizen in Beaufort County.

Differentiates Beaufort County

- OLLI is a nationally recognized asset

- Attracts educated, affluent, community minded segment of retirees

- Infrastructure will lift Beaufort County to national leadership in Lifelong Learning

Drives real estate values upward

Opens doors to unique collaborations

- Supports “high end” retirement communities in 3 municipalities



Community Partnerships. Discovered.